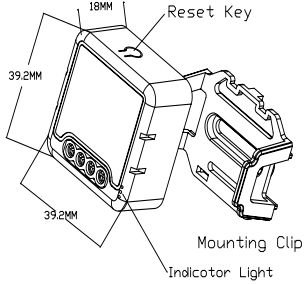


INSTRUCTION MANUAL

1CH Zigbee Dimmer Module



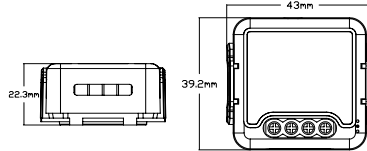
RoHS



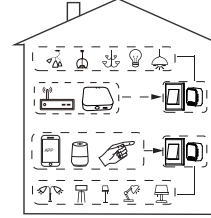
TECHNICAL SPECIFICATIONS

Product type	1CH Zigbee Dimmer Module
Voltage	AC100~240V 50/60Hz
Max. load	LED (AC230V 150W) (AC120V 80W)
Operation frequency	2.405GHz-2.480GHz IEEE802.15.4
Operation temp	-10°C + 40°C
Protocol	Zigbee 3.0
Operation range	<100m
Dims (WxDxH)	39.2x39.2x18 mm
IP rating	IP20
Warranty	2years
Certificates	CE ROHS

with mounting clip



Global international operation Whenever & Wherever You are, All-in-one Mobile App



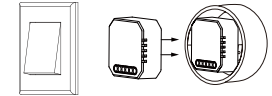
Inhouse local operation



INSTALLATION

▲ Warnings:

1. Installation must be carried out by a qualified electrician in accordance with local regulations.
2. Keep the device out of reach of children.
3. Keep the device away from water , damp or hot environment.
4. Install the device away from strong signal sources such as microwave oven that may cause signal interruption resulted to abnormal operation of the device.
5. Obstruction by concrete wall or metallic materials may reduce the effective operation range of the device and should be avoided.
6. Do NOT attempt to disassemble, repair or modify the device.



MANUAL OVERRIDE

The switch Dimmer terminal reserves the access of manual override function for the end-user to switch on/off, or adjust the light level by push-switch.

- Short Push (<1s): permanent on/off function.
- Long Push (>1s): adjust the brightness level.

Notes:

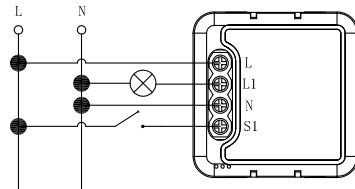
- 1) Both the adjustment on App and push switch can overwrite each other, the last adjustment remains in memory.
- 2) App control is synchronized with the manual switch.
- 3) The "S" terminals may be left unconnected if no manual control is required.

Wiring Instructions and Diagrams

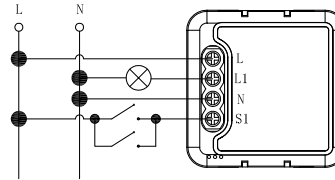
1. Turn off the power supply before carrying out any electrical installation work.
2. Connect wires according to the wiring diagram.
3. Insert the module into the junction box.
4. Turn on the power supply and follow switch module configuration instructions.

Notes: Take your smartphone close to the switch module when you're configuring, and make sure you have min. 50% Wi-Fi signal.

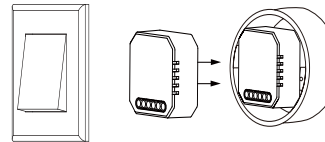
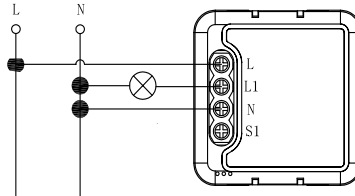
Single Control



Double Switch



Without Switch



FAQ

Q1: What should I do if I can't configure the dimmer module?

- a. Please check whether device is powered on.
- b. Make sure the Zigbee gateway is available.
- c. Whether it's in good internet conditions.
- d. Make sure the password entered in App is correct.
- e. Make sure the wiring is correct.

Q2: What device can be connected to the Zigbee dimmer module?

Triac led light, incandescent lamp or halogen lamp.

Q3: What happens if the WIFI goes off?

You can still control the light connected the dimmer module with your traditional switch and once WIFI is active again the device connected to module will connect automatically to your WIFI network.

Q4: What should I do if I change the WIFI network or change the password?

You have to re-connect our Zigbee dimmer module to the new Wi-Fi network accordingly as per the App User Manual.

Q5: How do I reset the device?

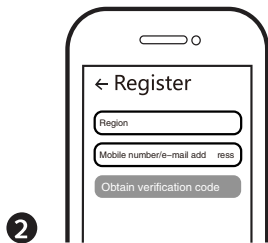
Turn off the traditional button switch (the one connected to the Zigbee dimmer module). Then press and hold for 10 seconds or more until the lamp connected to the module flash quickly for pairing.

APP USER MANUAL



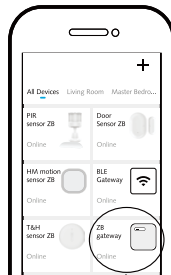
1 IOS APP / Android APP

Scan the QR code to download Tuya Smart App, or you can also search keyword "Tuya Smart" at App Store or Googleplay to download App.



2

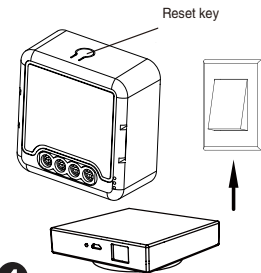
Log in or register your account with your mobile number or e-mail address. Type in the verification code sent to your mobile or mail box, then set your login password. Click "Create Family" to enter into the APP.



3

Open the control panel of the ZigBee gateway on the App

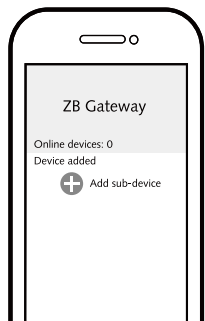
Before making the reset operation, pls make sure the ZigBee Gateway is added and installed to the WIFI network. Ensure that the product is within the range of ZigBee Gateway Network.



4

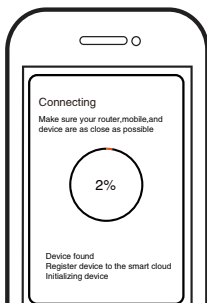
Zigbee Gateway

After the wiring of switch module is done, press the reset key for about 10 seconds or Press traditional dimmer off (the one connected to the zigbee dimmer module). Then press and hold for 10 seconds until light connected to the module will quickly and enter into configuration mode or until the indicator light inside the module is flashing quickly for pairing.



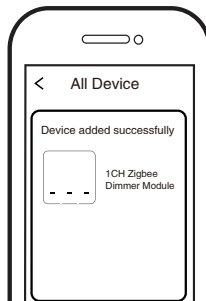
5

Click "+" (Add sub-device) to select the suitable product gateway and follow the on-screen instruction for pairing.



6

The connecting will take about 10-120 seconds to complete depending on your network condition.



7

Finally, you can control the device via your mobile phone.

SYSTEM REQUIREMENTS

- WIFI Router
- ZigBee gateway
- iPhone, iPad (iOS 7.0 or higher)
- Android 4.0 or higher

